



Regina Bothma

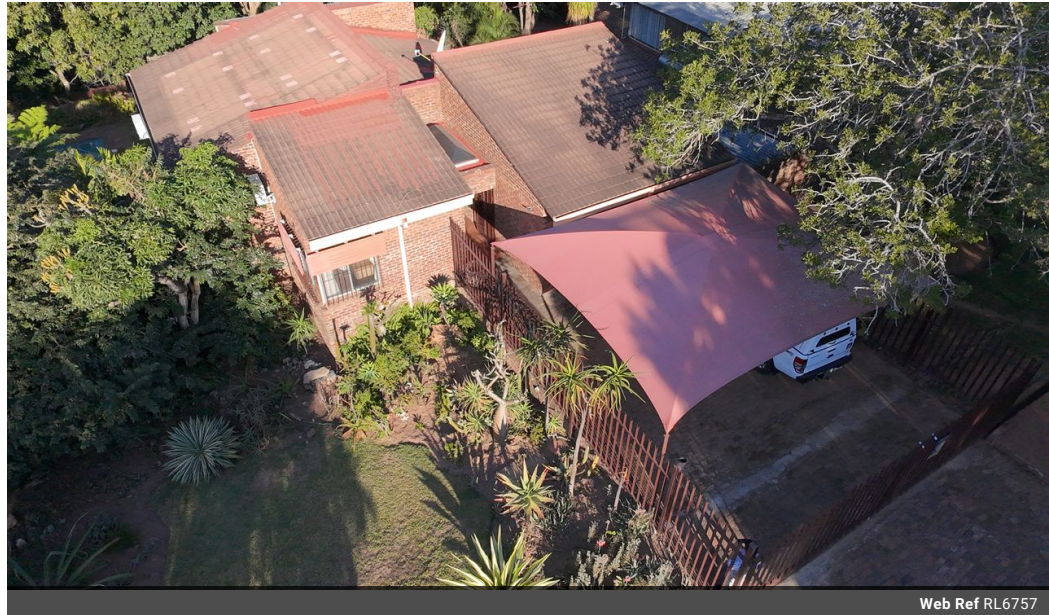
Non-Principal Property
Practitioner
Registered with PPRA
(FFC 095 211 4)

0825756860
regina@kellaprince.co.za

Contact Head Office

013 7544400

The Crossing Shopping Centre, Shop 78, Off
R40, Nelspruit, Mpumalanga
1200



Web Ref RL6757



R2,250,000

 3
  2.5
  2

Monthly Bond Repayment R22,842.65

Calculated over 20 years at 10.75% with no deposit.

Transfer Costs R95,138.00 **Bond Costs** R36,530.00

These calculations are only a guide. Please ask your conveyancer for exact calculations.

Monthly Rates R1,137

FAMILY HOME IN A GOOD AREA

This charming double volume house boasts solid construction and features 3 bedrooms, 2.5 bathrooms, and three spacious living areas. It includes a wine cellar and an outdoor verandah perfect for relaxation, complete with a swimming pool and jacuzzi. The property also offers a double lock-up garage with ample storage space plus two under cover parking's as well as two studies. Additionally, there is a large storeroom with an exterior room, toilet, and basin. To top it off, the estate is equipped with 5000 and 500-litre water tanks and is fully walled for your privacy and security.

Features

Pets Allowed	Yes				
Interior		Exterior		Sizes	
Bedrooms	3	Garages	2	Floor Size	330m ²
Bathrooms	2.5	Carports / Parkings	2	Land Size	1,080m ²
Kitchens	1	Security	Yes		
Recep. Rooms	3	Dom. Accom.	1		
Studies	2	Pool	Yes		
Furnished	No	Views	False		