



Regina Bothma

Non-Principal Property Practitioner
Registered with PPRA
(FFC 095 211 4)
0825756860
regina@kellaprince.co.za

Contact Head Office

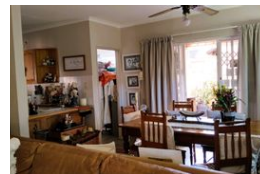
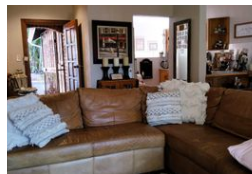
013 7544400

The Crossing Shopping Centre, Shop 78, Off
R40, Nelspruit, Mpumalanga
1200

NEW



Web Ref RL6771



R1,995,000

4 Bedrooms 2 Bathrooms 2 Carports

Monthly Bond Repayment R20,253.82

Calculated over 20 years at 10.75% with no deposit.

Transfer Costs R74,906.00

Bond Costs R32,760.00

These calculations are only a guide. Please ask your conveyancer for exact calculations.

Monthly Levy R1,100

Monthly Rates R1,200

SECURE COMPLEX LIVING IN STEILTES

Very spacious four bedrooms and 2 bathrooms (main en-suite) open plan living area with a sliding door walking out on a verandah, build in braai and big enough yard for kids to play around in a safe environment. Double garage and extra parking in front of the garage for another four cars. Walking distance from Steiltes shopping Centre.

Don't miss out on this excellent Townhouse.

Features

Pets Allowed Yes

Interior

Bedrooms	4
Bathrooms	2
Kitchens	1
Recep. Rooms	2
Furnished	No

Exterior

Garages	2
Carports / Parkings	4
Security	Yes
Pool	No
Views	False

Sizes

Floor Size	162m ²
Land Size	531m ²

